

# THE ENERGY SHOW 2016

6<sup>th</sup> & 7<sup>th</sup> APRIL - RDS, DUBLIN 4



*Presented by*

**seai**  SUSTAINABLE  
ENERGY AUTHORITY  
OF IRELAND

# Invitation to Participate

Dear Exhibitor,

Sustainable energy is a vibrant sector, reflecting underlying business confidence and the emphasis businesses are increasingly placing on managing their energy expenditure and securing their energy sources. The national and global opportunities are immense, billions of euros are being invested and saved and thousands of jobs created in the resulting supply chains.



The Energy Show brings together specifiers, buyers and suppliers, from all major sectors, to see and hear what's new in sustainable energy. It has become a mandatory fixture in the diaries of thousands of energy professionals and decision makers who want to innovate and invest. If you are a supplier of sustainable energy solutions then this is the perfect showcase for you.

Talk to Colm O'Grady and his sales team to see what opportunities exist for you at The Energy Show 2016.

Yours sincerely,

**William Walsh**

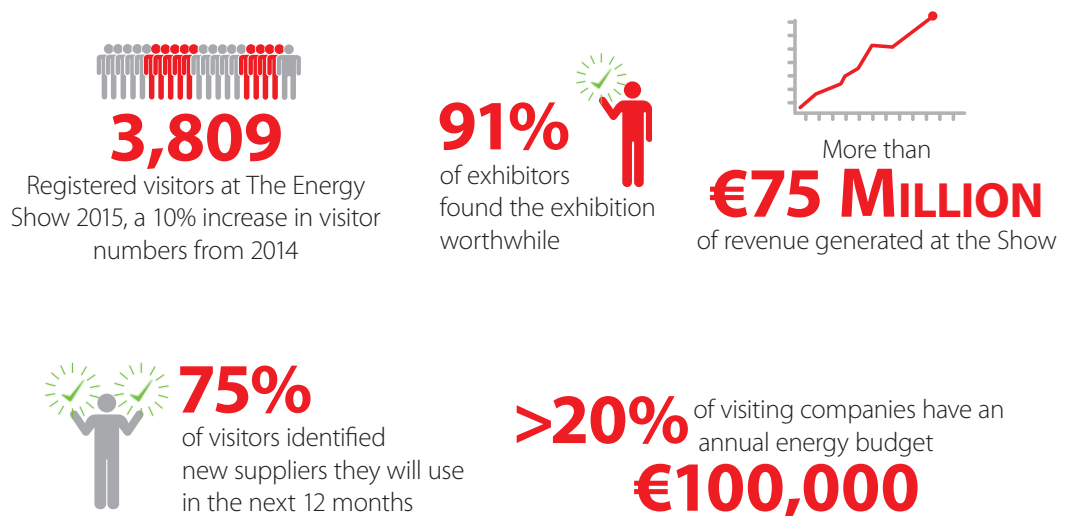
Interim Chief Executive Officer & Chief Operations Officer

## About the Show

The SEAI Energy Show is the only multidiscipline all-inclusive business to business energy event for the energy industry in Ireland. The sustainable energy industry is now valued at over €1.5 billion in Ireland alone and last year over €75 million in revenue sales was generated by exhibitors at the 2015 Energy Show.

The SEAI Energy Show is the ideal place to learn, do business and network within your industry. As the flagship event for professionals in the energy sector throughout Ireland and Europe, this free two day event is a business only exhibition not to be missed.

## Energy Show Key Facts



Energy Show 2016 | RDS | 6th & 7th April | Wed: 10am – 7pm, Thurs: 9am – 5pm

## Here's what our exhibitors had to say...

“ Footfall at the AIB networking hub was superb over the two days such that our team were on their feet all day with customer queries. The Energy Show enables us to meet both sides of our customer base in this sector, the SMEs and suppliers, and ensures we refresh our understanding of their financial needs.”

**AIB**

“ It's very rare that you can get an event that is going to bring frontline operational people, commercial people, and key decision makers in governmental policy and industry experts in the one place, and I think for that reason alone it is a really valuable platform for us all to be taking part in.”

**Veolia**

“ Energy Show 2015 has been a great success for Energia and our partners. There has been a great buzz around the Show and our stand has always been busy.”

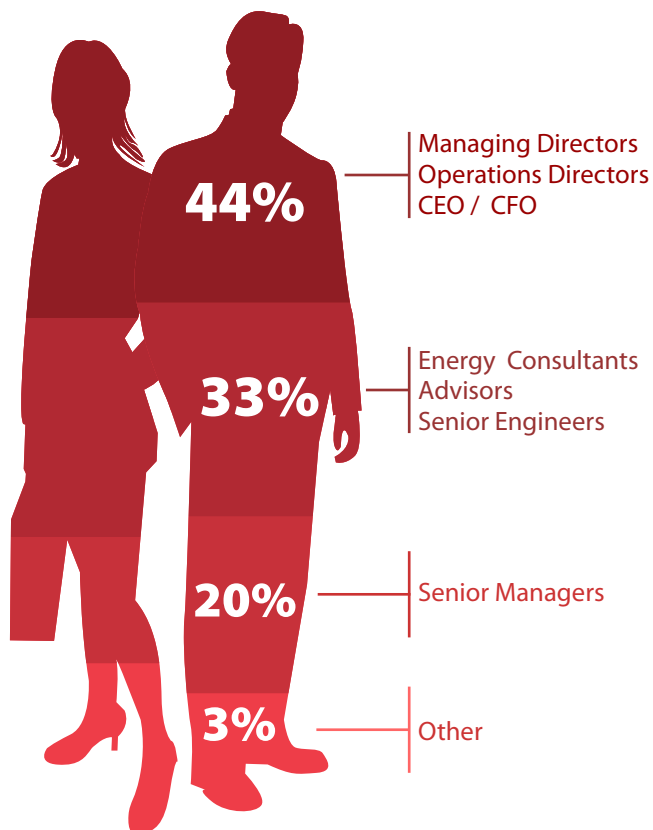
**Energia**

## Key Reasons to Exhibit

- Promote your products and services to up to 4,000 attendees
- Generate sales with access to key decision makers
- Network with industry players and stay up to date on market developments
- Access to international market representatives and multiple side events
- Profile your company on the Energy Show website to thousands of visitors

## Visitor Profile

A breakdown of **Energy Show 2015** attendees



**Building Design and Development Professionals** - Architects, Building/ Consulting Engineers, Development Companies, Plant Owners and Operators, Mechanical and Electrical Contractors.

**Energy Users in Commercial, Industrial and Public Sectors** - Offices, Retail units, Hotels, Sports and Leisure Centres, Community Centres, Healthcare/ Hospitals, Pharmachem, Food and Agri, Mining, Forestry and Timber, Electronics, Local Authorities, Third Level Institutions, Waste and Water Pumping, Small and Medium Enterprises.

**Energy Suppliers and Providers** - Independent Power Producers, Local Authorities, Renewable Energy Developers, State Utilities, Agents and Distributors, Original Equipment Manufacturers.

**Related Interests** - Banks and Financial Institutions, Environmental NGOs.

## Who Should Exhibit?

**Building Service and Technology Providers** - Air Conditioning, Air Tightness, District Heating, Insulation, HVAC, Lighting, Heating and Cooling, Monitoring and Targeting, Motors and Drives, Refrigeration, Compressed Air, Process Specialists, Heat Recovery, Ventilation.

**Energy Management Companies** - Companies involved in: Consulting, Auditing, Metering, Building Energy Management Systems and Facilities Management, Energy Management Bureaus, ESCOs, Energy Agencies.

**Professional Trade Associations** - Professionals including Architects, Engineers, Project Managers, Solar, Wind, Bioenergy, Geothermal, CHP experts.

**Suppliers** - Suppliers, Manufacturers or consultants in the areas of PV and Solar Thermal Energy, Wind Energy, Geothermal Energy, Bioenergy.

**Energy Utilities and Suppliers** - State Utilities, Gas/Electrical Suppliers, Independent Power producers, Energy Service Companies.

## Cost to Exhibit

Exhibition booking is available through the online booking form. SEAI is dedicated to add value to the exhibitor experience and has supported a number of new features without effecting the rate per sq.m. Exhibitors can rent either space only or a shell scheme booth.

The following is included in the costs:

### Space Only €211 + VAT per square metre:

- Carpet
- Stand cleaning
- Night security
- Supply of invitation tickets for your customers
- The exhibiting company will be listed in the exhibition section in the Energy Show 2016 final programme
- Extra parking passes for the RDS for the two days of the show and the set up day

### Shell Scheme €225 + VAT per square metre:

consists of all of the above and a modular construction with:

- Two energy efficient spotlight
- One double socket
- Bus stop sign for company name

## WEEE Enforcement

Energy Show exhibitors who are producers or distributors of electrical or electronic equipment and/or batteries must comply with the WEEE and Batteries regulations.

For further details visit:

[www.weee-enforcement.ie](http://www.weee-enforcement.ie)

[www.batteries-enforcement.ie](http://www.batteries-enforcement.ie)

## Optional Extras

Optional extras such as furniture, additional lighting, telephone broadband, Wi-Fi, power to your stand and stand dressing are available from our contractors. Particulars, including prices, will be detailed in our Exhibitors' Manual which will be available online three months in advance of the Show at [www.seai.ie/energyshow](http://www.seai.ie/energyshow)

## Contact Details

The Energy Show exhibition is being organised on behalf of SEAI by Conference Partners. If you have any questions or would like to book your stand please contact one of our team.

### Sinead Lawlor

Account Manager

[Sinead.lawlor@conferencepartners.ie](mailto:Sinead.lawlor@conferencepartners.ie)

(087) 640 3609

### Colm O'Grady

Sponsorship & Exhibition Director

[Colm@conferencepartners.ie](mailto:Colm@conferencepartners.ie)

(087) 223 3477

### Shauna Taylor

Sponsorship & Exhibition Sales Executive

[shaunat@conferencepartners.ie](mailto:shaunat@conferencepartners.ie)

(086) 825 9353

**For General Details:** [Energyshow2016@conferencepartners.ie](mailto:Energyshow2016@conferencepartners.ie)